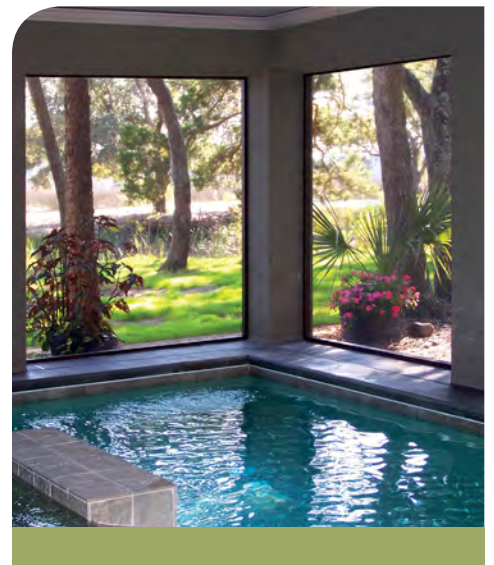




ScreenRail

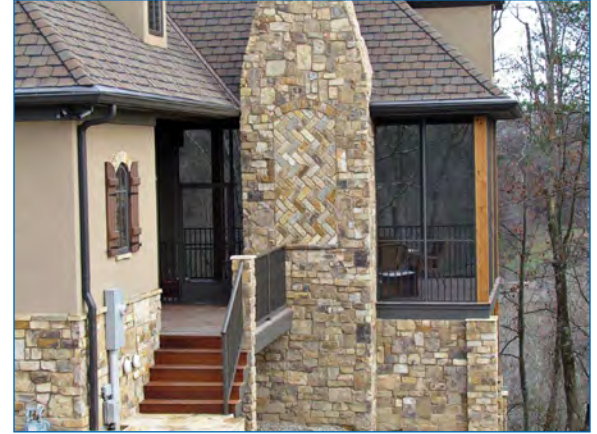
Designed to Keep You Outdoors



Certified PCI 4000 A-2 (AAMA 2604) Powder Coating
Lifetime Limited Warranty & Virtually Maintenance Free

ScreenRail

Beauty meets strength. Elegance meets distinction. Masterpiece meets innovative engineering. Westbury® ScreenRail is designed with these essential elements in mind. With a variety of designs, colors, and textures, you have the power to decide what fits your home. Whether you are adding ScreenRail to the front of your home or to the deck in the back, Westbury® ScreenRail can turn your home into a welcoming retreat.



FEATURES

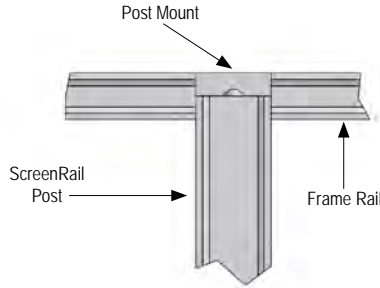
- Structural balcony railing system
- Available heavy duty kick panel helps prevent screen damage from feet and pets
- Easy to assemble 4', 6' and 8' sections
- Assembled universal door (right or left hand hinge) with heavy duty frame (Outward Swing Only)
- Available in 12 standard Certified PCI 4000 A-2 (AAMA 2604) compliant powder coating colors. Custom Colors and AAMA 2605 available by special order
- Durable flat spline secures screen
- Designed to allow you to choose the screen type that best meets your needs*

*Screen material not supplied by DSI. Heavier screens may require a smaller spline.

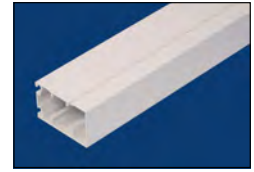
ScreenRail with Structural Railing



SCREEN RAIL POST

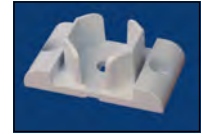
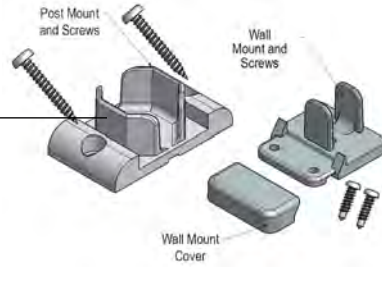


2" Post
8-1/2', 9-1/2',
11-1/2'



Frame Rail
8-1/2', 12'

POST & WALL MOUNTS



Post Mount



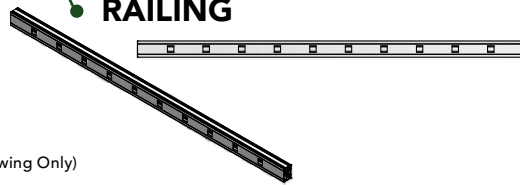
Wall Mount

SPECIFICATIONS

Lengths:	4', 6', 8'
Heights:	36", 42"
Rail Size:	2" w (.063") x 1-1/4" t (.063")
Baluster Size:	3/4" x 3/4" (.045")
Frame Rail Size:	2" w (.045") x 1-1/4" t (.045")
Frame Rail Lengths:	8-1/2', 12'
Post Size:	2" x 2" (.090")
Post Lengths:	8-1/2', 9-1/2', 11-1/2'
Door* Widths:	32", 36", 48"
Door* Height:	80"

*Assembled universal door (right or left hand hinge) with heavy duty frame (Outward Swing Only)

RAILING

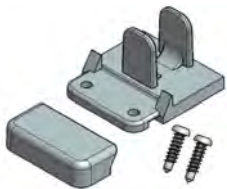


Top/
Bottom Rail

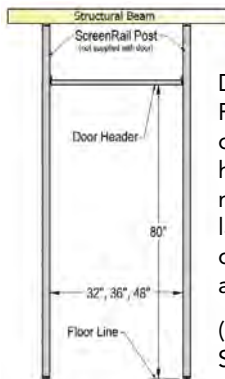
ScreenRail with Heavy Duty Kick Panel Sections



Door Header and Mid Rail



Hardware



DOOR

Door Kit includes Frame, matching door jamb, door header with mounts, hinges, latch, closer kit, door sweep, and spline.
(Outward Swing Only)



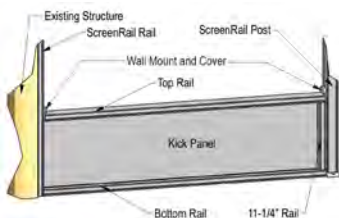
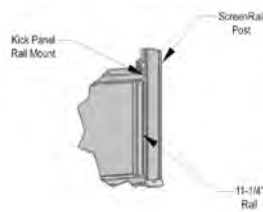
KICK PANEL RAIL MOUNT & POST



Kick Panel Rail



Wall Mount



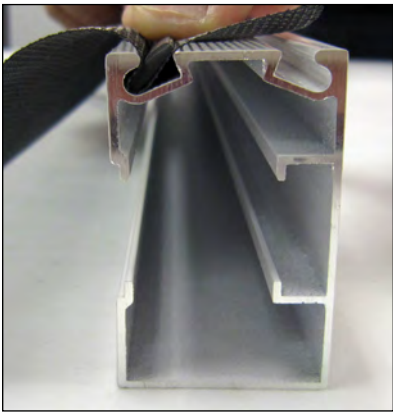
KICK PANEL

SPECIFICATIONS

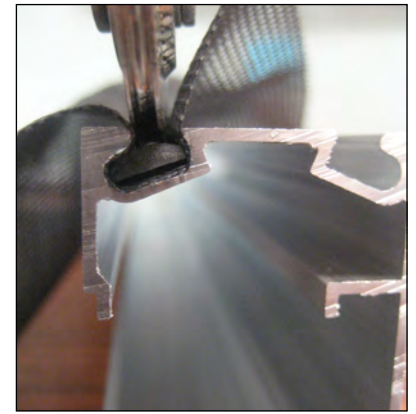
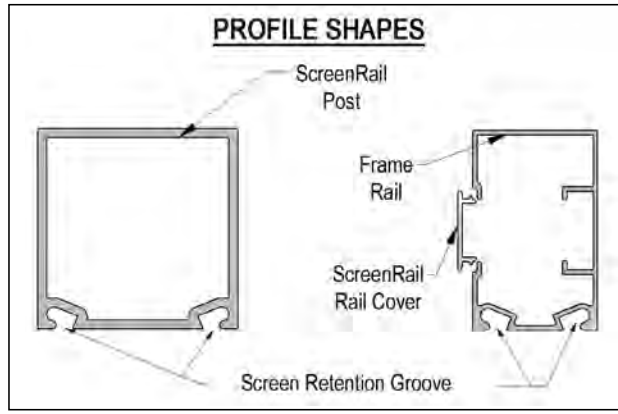
Lengths:	4', 6', 8'
Post Size:	2" x 2" (.090)
Post Lengths:	8-1/2', 9-1/2', 11-1/2'
Door* Widths:	32", 36", 48"
Door* Height:	80"

*Assembled universal door (right or left hand hinge) with heavy duty frame (Outward Swing Only)

ScreenRail Screen Installation*



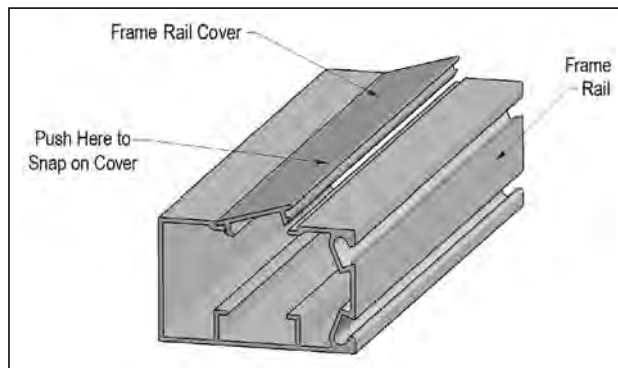
Screen & flat spline inserted into angled screen retention groove to insure tighter fit



Spline rollers used to fit screen & spline into groove



Screen is trimmed



ScreenRail cover snaps into frame rail
Color shown: Satin Black

*Screen material not supplied by DSI. Heavier screens may require a smaller spline.

Standard Aluminum Colors

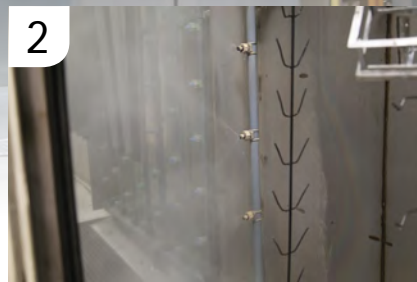


Colors shown are a close representation of the true color. Please consult actual samples for accurate powder coating colors. Custom colors available.

POWDER COATING



1 The raw premium-grade aluminum is inspected to be free of blemishes and is not exposed to the outdoor elements.



2 The product enters a heated acidic cleaning stage to remove extrusion debris and fabrication oils.



3-6
CLEAN: City water rinse
CLEANER: Recycling reverse osmosis water rinse
CLEANEST: Pure reverse osmosis water rinse
SEALER: Dried-in-place aluminum sealer



7-8 A 200 MPH air blast removes water drops from the pre-treated aluminum. A convection oven completes the dry-off process.



9 Powder is applied with 18 automated and 2 manual spray guns. Compressed process air is dried to -35°F Dew Point for superior adhesion.



10 The powder coating is then bonded and adhered to the aluminum sub-straight in a 400 degree cure stage.



The powder coating application booth produces zero VOC emissions. Powder is stored and applied in a climate controlled positive pressure environmental room. Ten pre-treat system titration checks twice per shift maintain system parameters and ten QC checks are completed every hour on product coming off the powder-coating line. Parts are not touched by human hands during the pre-treat, dry-off, application and cure process to maintain ultimate cleanliness of powder-coated parts.



DSI is a PCI 4000 certified and verified AAMA 2604 and AAMA 2605 compliant powder coating applicator. The powder coating process is accredited by the American Architectural Manufacturing Association and the Powder Coating Institute. Our powder coating is custom blended from a Super Durable Polyester TGIC (Triglycidyl Isocyanurate) resin-base, using premium pigmentation to meet AAMA 2604 specifications. Our AAMA 2605 is a fluorocarbon polymer resin system.



ScreenRail

Some Examples of Compatible Screen Types

- | | |
|--|---|
| Charcoal Fiberglass Screen | Pet Screen Mesh |
| Pool & Patio Screen | 80% Tex Solar Screen |
| Super Screen | 90% Tex Solar Screen |
| Tiny Mesh Super Screen | (Above screens require
.285 flat spline) |
| (Above screens use standard
.310 flat spline) | |

3 Step Packaging

The product is protected to insure that it arrives to you damage-free



1 Post & Rails Individually Sleeved



2 Cardboard Insures Added Protection



3 Heat-Wrapped & Banded Bundles



screenraildsi.com

We have tried to make this catalog comprehensive and factual. We reserve the right to discontinue at any time, without notice, colors, materials, equipment and availability. Since some information may have been updated since the time of printing, we are not responsible for typographical or pictorial errors. Materials shown may vary slightly from actual colors. ©Digger Specialties 2018 SP 03/18 99596