



Westbury®

ALUMINUM RAILING



WESTBURY® TUSCANY
**JULIETTE BALCONY
SECTIONS**



Digger
Specialties
Inc.

Transforming the Outdoor Living Experience™

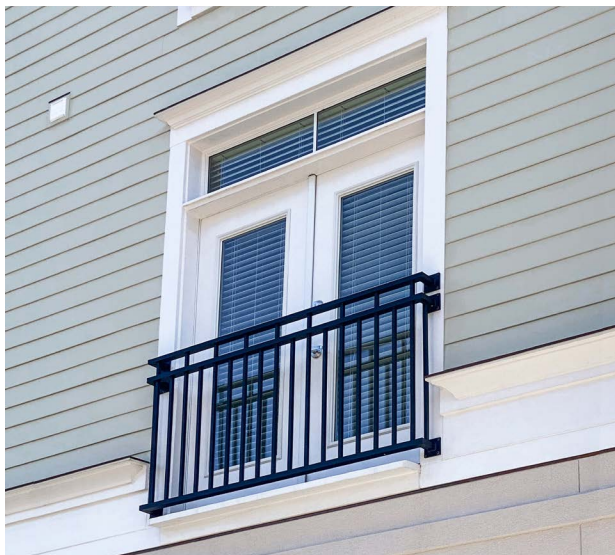
JULIETTE BALCONY SECTIONS

Westbury Tuscan Juliette Balcony aluminum railing is a cost-effective alternative to building a full balcony on upper stories of residential and multi-family properties. Westbury Tuscan Juliette Balcony railing serves as an attractive guardrail across the opening of doors and windows for safety while also allowing light transmission into upper story rooms.



Product Details

Model	Section Type	Section Lengths	Height	Infill	Infill Spacing	Top Rail	Bottom Rail
Tuscany (C10)	Assembled	7', 8', 9'	42"	3/4" x 3/4" (.045") Square Balusters	3-7/8"	1-3/4"W (.090") x 1-3/8"H (.280")	1-3/4"W (.090") x 1-1/4"H (.120")



Custom sections including length and style are available for Special Order

Contact DSI's Technical Services for custom sections.



Features & Benefits

Pre-Assembled Sections

Can easily be attached to building surfaces.

7' x 42" (6" offset), 8' x 42" (9" offset), and 9' x 42" (9" offset) Sizes

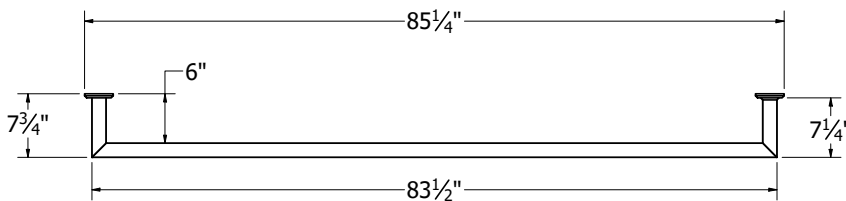
For use with French, double, and sliding doors or a large window.

12 Standard Colors

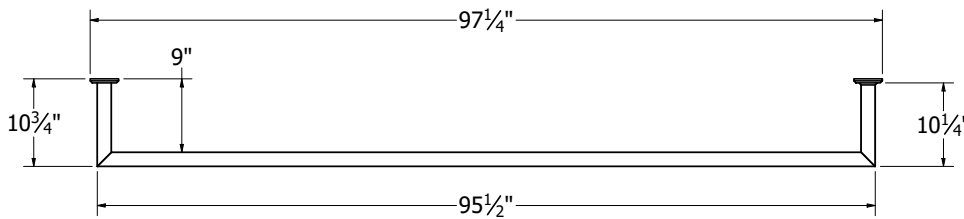
DSI's proprietary 10 step powder coating process is the most stringent in the industry and insures lasting color and finish.



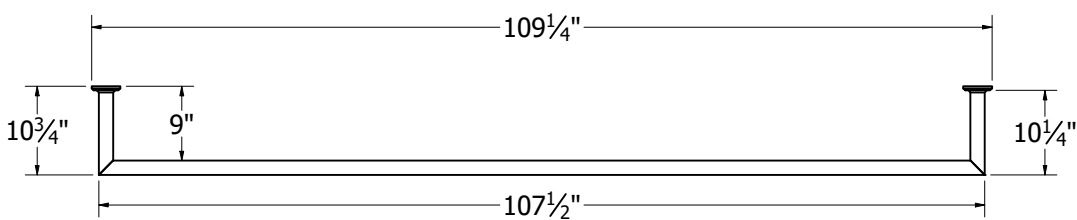
7' x 42" (6" offset)



8' x 42" (9" offset)



9' x 42" (9" offset)



COLORS & POWDER COATING



Textured Colors



White Fine Texture



Grey Fine Texture



Bronze Fine Texture



Brown Fine Texture



Black Fine Texture

Non Textured Colors



Gloss White



Gloss Beige



Sandy Shore



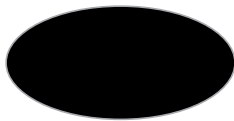
Ninety Bronze



Speckled Walnut



Chocolate



Satin Black

Colors shown are a close approximation of the true color. Please request actual samples for accurate powder coating colors.

Exclusive Powder Coating Process

DSI is an industry leader in Powder Coated Aluminum Products. State-of-the-art technology is used to provide a high-quality and durable finish that is more resistant to the effects of impacts, chemicals, ultra-violet light, moisture, and extreme weather conditions.

The process begins with a system certified by the Powder Coating Institute (PCI) and continues with the American Architectural Manufacturers Association (AAMA) / Fenestration and Glazing Industry Alliance (FGIA) verifying our Powder Coating. These stringent processes provide homeowners with peace of mind in their investment.

Our Aluminum Lifetime Limited Warranty includes a Fade Warranty as well as a Salt and Abrasive Environments Warranty providing one of the best warranties in the industry.



1 The raw premium-grade aluminum is inspected to be free of blemishes and is not exposed to the outdoor elements.



2 The product enters a heated acidic cleaning stage to remove extrusion debris and fabrication oils.



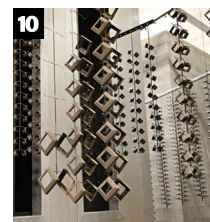
3-6 **Clean:** City water rinse
Cleaner: Recycling reverse osmosis water rinse
Cleanest: Pure reverse osmosis water rinse
Sealer: Dried-in-place aluminum sealer



7-8 A 200 MPH air blast removes water drops from the pre-treated aluminum. A convection oven completes the dry-off process.



9 Powder is applied with 18 automated and 2 manual spray guns. Compressed process air is dried to -35°F Dew Point for superior adhesion.



10 The powder coating is then bonded and adhered to the aluminum substrate in a 400 degree cure stage.