

CABLE FENCE



54" Tall 3-Rail

IT'S YOUR VIEW ENJOY IT

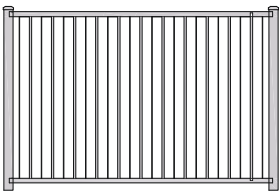
DSI Cable Fence is designed to provide the security of a fence while allowing you to enjoy your view. Our vertical pickets and stainless steel cables provide an architectural style without obstructing your view. All DSI Cable Fence sections are delivered to you assembled, tensioned, and ready to install.



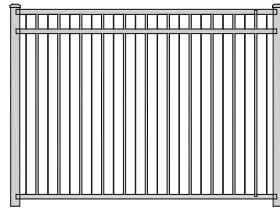
48½" Tall 2-Rail



SPECIFICATIONS



2-Rail

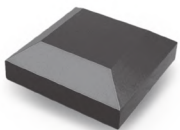


3-Rail

Section Length	72" Centers
Heights	48½" (2-Rail), 48" & 54" (3-Rail)
Standard Posts	2½" x 2½" Line & End 3" x 3" Corner & 3-Way
Rails	1-¾" w x 1-⅜" t (Top) 1-¾" w x 1-¼" t (Mid & Bottom)
Pickets	5/8" Round
Cables	1/8" Stainless Steel
Spacing	3" c/c

ACCESSORIES

POST CAPS



Flat Cap
2½", 3"

MAGENA STAR

Magenta Star Ornamental Low Voltage and Solar Lights.
Visit magenastar.com for more information and to see additional styles.



Ornamental Low Voltage
2½", 3"



Ornamental Solar
2½", 3"



Ornamental Low Voltage Side Light



Ornamental Low Voltage Tear Drop Side Light

GATES

Single Widths: 36", 42", 48", 60", 72"

Double Widths: 72", 84", 96", 120", 144"

Gate Posts: 2½" x 2½" (.090) w/Inserts = .215 Wall

Optional 2½" x 2½" x .125" Wall

All Rails and Pickets are Welded



54" Tall 3-Rail Gate

HARDWARE

HINGES



Tru-Close Hinge



Kwik Fit Hinge



SS Med Duty Hinge

LATCHES



Lokk Latch



Lokk Latch Deluxe



Lokk Latch Magnetic



Magna Latch
Vertical Pull 6"



Magna Latch
Top Pull 20-1/4"



SS Gravity Latch



COLORS

DSI Aluminum Products are offered in 12 standard AAMA 2604 colors. Custom colors and AAMA 2605 colors are available by special order.



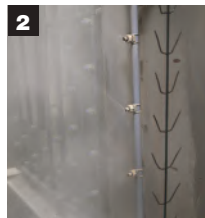
Colors shown are a close representation of the true color. Please consult actual samples for accurate powder coating colors.

POWDER COATING PROCESS

DSI's aluminum Powder Coating offers an uncompromising quality created by state-of-the-art technology. Our system provides the highest quality powder coating on the market with a lifetime limited warranty giving you peace of mind in your investment.



1 The raw premium-grade aluminum is inspected to be free of blemishes and is not exposed to the outdoor elements.



2 The product enters a heated acidic cleaning stage to remove extrusion debris and fabrication oils.



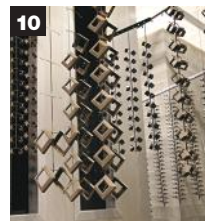
3-6 **Clean:** City water rinse
Cleaner: Recycling reverse osmosis water rinse
Cleanest: Pure reverse osmosis water rinse
Sealer: Dried-in-place aluminum sealer



7-8 A 200 MPH air blast removes water drops from the pre-treated aluminum. A convection oven completes the dry-off process.



9 Powder is applied with 18 automated and 2 manual spray guns. Compressed process air is dried to -35°F Dew Point for superior adhesion.



10 The powder coating is then bonded and adhered to the aluminum substrate in a 400 degree cure stage.



diggerspecialties.com



We have tried to make this catalog comprehensive and factual. We reserve the right to discontinue at any time, without notice, colors, materials, equipment and availability. Since some information may have been updated since the time of printing, we are not responsible for typographical or pictorial errors. Materials shown may vary slightly from actual colors. ©Digger Specialties 2019/04 BR007