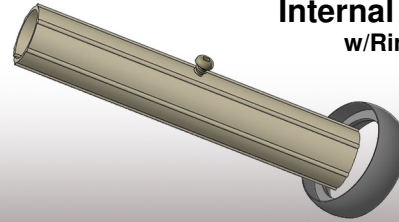


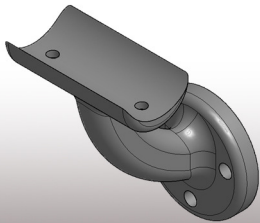
### 1 3/8" Aluminum Handrail

- Available in 8' and 16' Lengths.
- Verified AAMA 2604-05 Compliant Powder Coating in Standard Colors.



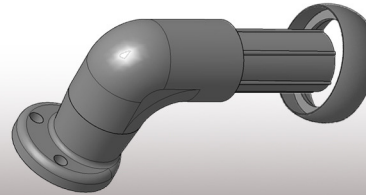
### Internal Connector w/Ring Collar

- Internal Connector is used to connect handrail(s) and elbow(s) together.
- Ring Collar is used to cover splices.



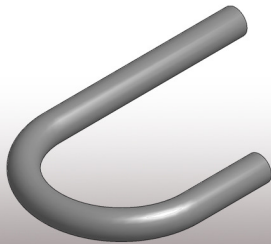
### Wall Mount

- Attaches handrail to wall or post.
- Includes (2) Stainless Steel screws to attach handrail.
- Has (3) 1/4" holes for fastening to wall or post. (*Fastener is not included.*)
- Verified AAMA 2604-05 Compliant Powder Coating in Standard Colors.



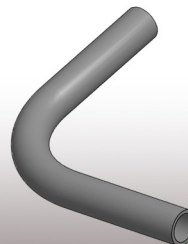
### Wall Return w/Ring Collar

- To return to a wall from handrail.
- Ring Collar is used to cover splices.
- Verified AAMA 2604-05 Compliant Powder Coating in Standard Colors.



### Handrail Return 180° Elbow

- Protrudes past a post and returns to it.
- Verified AAMA 2604-05 Compliant Powder Coating in Standard Colors.



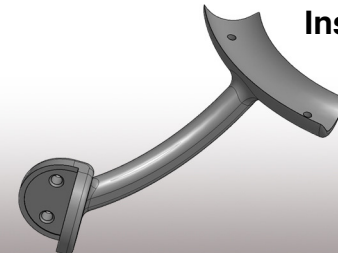
### Handrail Return 90° Elbow

- Inside and outside corners.
- Use (2) of these to wrap around a 2" or 4" post.
- Verified AAMA 2604-05 Compliant Powder Coating in Standard Colors.



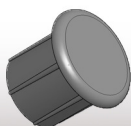
### Handrail Elbows 5°, 31°, 34°, 36° Elbows

- Levels out at top and bottom of stairs if stairs are at a 5°, 31°, 34°, or 36° angle.
- Verified AAMA 2604-05 Compliant Powder Coating in Standard Colors.



### Inside Corner Mount

- Used when an inside corner is needed on a level area.
- Use with 90° elbow.
- Verified AAMA 2604-05 Compliant Powder Coating in Standard Colors.



### Internal End Cap

- To cap off handrail if not returning to a wall or post.
- Verified AAMA 2604-05 Compliant Powder Coating in Standard Colors.



### Collar Ring

- To cover splice.
- Included with Internal Connector and Wall Return.
- Verified AAMA 2604-05 Compliant Powder Coating in Standard Colors.